

# Own the Crown Investment Project in Vientiane Province!



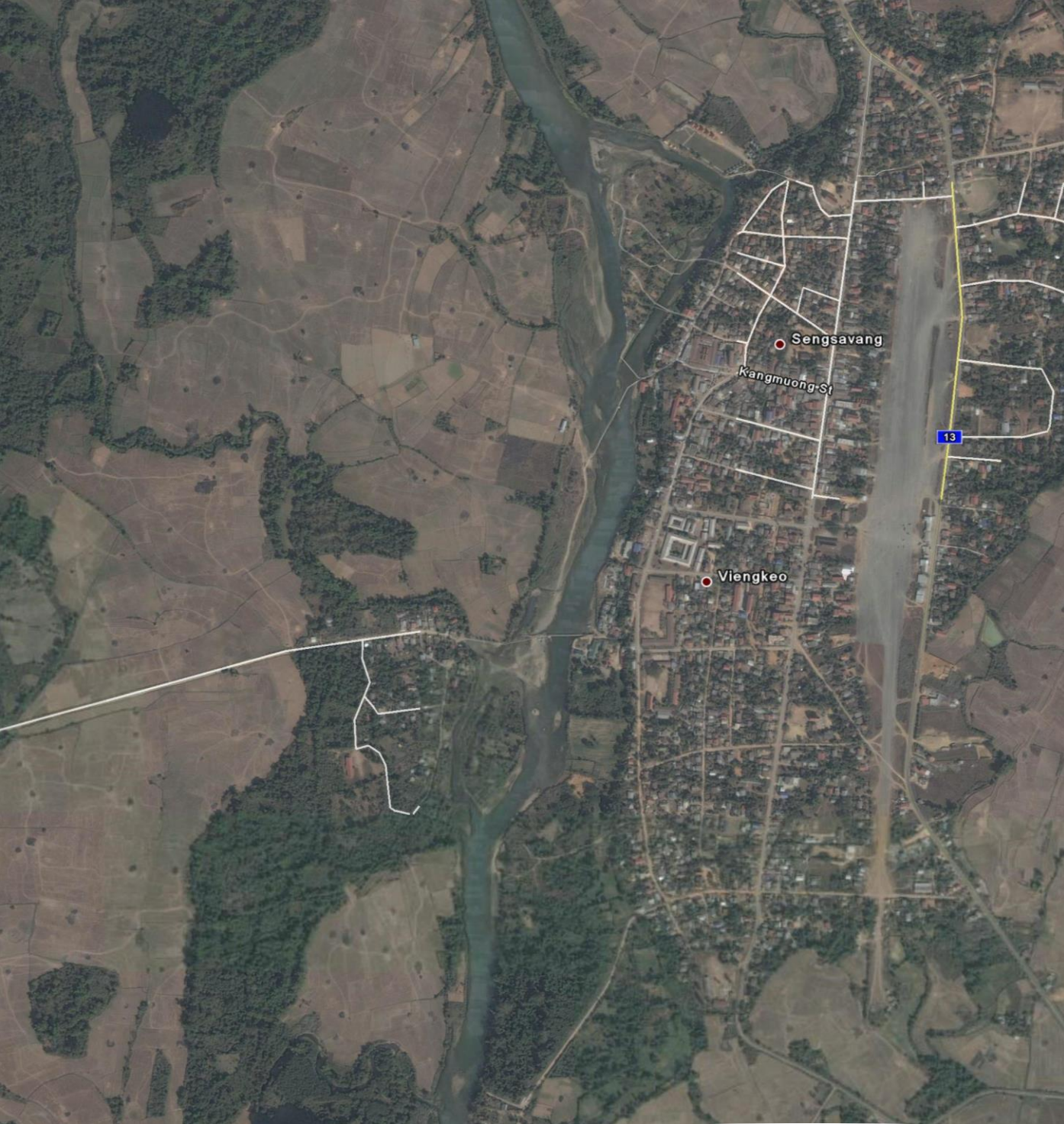
**Vientiane Province Industrial Park**

## Executive Summary

Vientiane Province is the gateway linking Vientiane Capital to the northern provinces of Laos. Covering an area of 15,927 mk2, it borders Vientiane Capital and Thailand to the south, Sayabouly Province to the west, Luang Prabang Province to the north, Xiengkhoang Province to the northeast, and Bolikhamxay Province to the east.

Because of its special connection to Vientiane Capital (the capital, formally known as Vientiane Prefecture, was split from Vientiane Province in 1989), Vientiane Province has been enjoying better infrastructure and more economic and technological advancements than other provinces of Laos. Its major cash crops include rice, corn, cassava, and job's tear plants. Several agro-processing industries have been operating in the province, e.g., a cassava flour plant, a corn milk factory, a chopstick plant, etc. Other notable businesses are: Vang Vieng Cement Company, Tile Manufacturing Company, Mattress Manufacturing Company, Lao Tobacco Company, and Para Rubber Processing Factory. When these factories were constructed, there were no city-zoning regulations in place. Companies had to look for potential factory sites by themselves. Some leased state land, while others signed land lease agreements with private land owners.





## Project Details:

To better serve future investments, especially manufacturing companies, the Investment Promotion Section of Vientiane Province is honored to invite a private investor(s), domestic and or foreign, to develop an industrial park in Nong Khone Village of Phonhong District. Two sites that are located near one another have been allocated for the project. Site A has a land area of 46.7 hectares, and site B is 75.24 hectares. Currently, both sites are covered with a good mix of immature woodland and bamboo.

The proposed locations are ideal for creating a large-scale industrial park since they sit in the 443 economic corridor of Vientiane Province. Phonhong has been designated the province's industrial district. National Route 13 leads to the Friendship Bridge and Thanaleng Warehouse. A local road meets up with National Route 11, which leads to Muang Meun and Sanakham border checkpoints.

The investor(s) is expected to develop a large-scale industrial park complete with roads, sewage and street runoff drainage systems, waste water treatment facilities, flood prevention measures, an in-house power generation system, a water supply plant, gas stations, convenient stores, staff residences and other necessary facilities.

**Project duration:** 50 years.

## Project details (continued)

**Form of investment:** Private, domestic and or foreign, investment.

**Local services:** The site has access to electricity, water piped in from a creek, ground water, garbage collection, as well as internet, landline, and mobile phone services. It is approximately 2 km from a 22kV transmission network, 8 km from a major market and a bus terminal, and about 60 km from Vientiane Capital.

**Local construction supplies:** The developer(s) may utilize available local construction materials such as sand and gravel, cement, bricks, clay blocks, roof tiles, zinc sheets, wooden boards and beams, and steel bars. Some electronic appliances can also be found locally.

**Local Produce:** Beef, buffalo, goat, pork, chicken, duck, fish, other seafood as well as fresh fruits and vegetable are easily accessible.

**Labor:** Vientiane Province has a total population of approximately 432,400 people with the workforce accounting for 46.5% of the population. Minimum monthly salary is 900,000 kip. Local daily wages range from 40,000 kip to 50,000 kip per person.



## Income/Incentives & Minimum Requirements

### Income generating opportunities from:

- Facility leasing to other businesses.

### Incentives

- 4 years profit tax holidays; and
- Import Tax Exemption for equipment to operate the project.

### Support from the Government

- Shorten project application process;
- Provide consultation in every step of the project application process; and
- Facilitate in other public service access.

### Minimum Requirements

- Memorandum of Understanding (MOU);
- Feasibility studies and business development plan;
- An Initial Environmental Examination (IEE) or an Environmental Social Impact Assessment (ESIA). The IEE or ESIA will involve the public and seek to mitigate all negative impacts while maximizing benefits;
- State land concession agreement;
- Any business operation licenses and agreements required by concerned government authorities;
- Capital of US\$45,000,000;
- Must have a 'buy local' policy;
- Must provide business opportunities for local community and promote the livelihood of local villagers;
- Must give priority to locals in the job recruitment process; and
- Must contribute to the community development fund.

## Contact:

Ministry of Planning and Investment  
Investment Promotion Sector, Department of Planning and  
Investment, Vientiane Province,  
Telephone: +856-23-400 155  
email: vt\_dopi@hotmail.com  
Planning and Investment Office, Phonhong District



## Disclaimer:

The information in this document (including but not limited to, photographs, descriptions, tables, projections and prices) are for guidance only. While every effort has been made to offer current and reasonable estimates, errors can occur. The investment promotion department of the Ministry of Planning and Investment makes no warranties or representations as to the accuracy, correctness, reliability or otherwise with respect to such information, and assumes no liability or responsibility for any errors or omissions in the content contained in this document. Within this document you may find links or references to third party material and third party web sites. The IPD accepts no liability in respect of the contents of such material or sites. The IPD should not be taken to be endorsing, publishing, permitting or authorizing such materials or sites. The IPD may revise the information and resources contained in this document from time to time and reserves the right to make such changes without any obligation to notify past, current or prospective visitors to this document.

The content relating to the potential performance of an investment is not necessarily a guide to its performance in the future. The value of investments or income from them may go down as well as up. Prices quoted were based on US dollars when the document was created.

The information contained in this document should not be construed as financial, tax, legal or any other professional advice or service. You are advised to consult a financial and/or legal professional advisor from suitably regulated sources.

Except where noted otherwise, all material in this document is the property of IPD with all rights reserved. Without the prior written consent of IPD, no permission is granted to copy, modify, post or frame any text, graphics, or logos.