

## Industrial Rice Farming in Tholakhom

Estimated revenue after 3 years in operation of approx. US\$100,000 – 150,000 per year and up.

Lao PDR  
Vientiane Province  
Thoulakhom District

**Be the first in Laos to run an industrial rice farm!**

Call Now: +856-23-400 155



### Project Details

Vientiane Province is blessed with the largest plain in Laos. Stretching from the Mekong riverbank eastward to the Phou Khao Khouay Mountain Range, the land is rich in fertile soil suitable for plant cultivation and livestock farming. Accordingly, it is one of the major food production areas of the country.

Popular crops include rice, corn, cassava, limes, cucumbers, and watermelons. Of course, rice is Lao's staple food. It is pivotal to our way of life. 66,068 hectares of the province's total 111,298 hectare agricultural land area are for rice growing.

Currently, the Department for Investment Promotion is seeking investor(s) to run an industrial-scale rice farming business in Thoulakhom. The district falls within the economic corridor along the Nam Ngum River. This proposed business is a part of the country's strategic agricultural production plan. Therefore, it will receive full support from the central government.

Thoulakhom has a long tradition in rice farming. So far, its farmers are able to grow rice twice a year, yielding an average total 75,468 tons of rice, generating US\$25,940,000 per year. The proposed site has access to Nam Mang 3 Irrigation. With the right technology, the company could grow rice 3 times per year.

**Project duration:** 10 years.

**Form of investment:** Private, domestic and or foreign, investment.

### Project Details (cont.)

**Local services:** The site has access to an irrigation system, electricity, and underground water, as well as landline and mobile phone services. It is within 5 km from the Thoulakhom District administrative offices, market and bus terminal, Nam Mang 3 Irrigation, and the Banque pour le **Commerce Exterieur Lao**.

**Local construction supplies:** The developer(s) may utilize available local construction materials such as sand and gravel, cement, bricks, clay blocks, drainage pipes, roof tiles, zinc sheets, wooden boards and beams, and steel bars. Some electronic appliances can also be found locally.

**Heavy construction machinery:** There are 10-wheelers, excavators, bulldozers, cranes and other heavy hydraulic machines available in the area.

**Local Produce:** Beef, buffalo, goat, pork, chicken, duck, fish, other seafood as well as fresh fruits and vegetable are easily accessible.

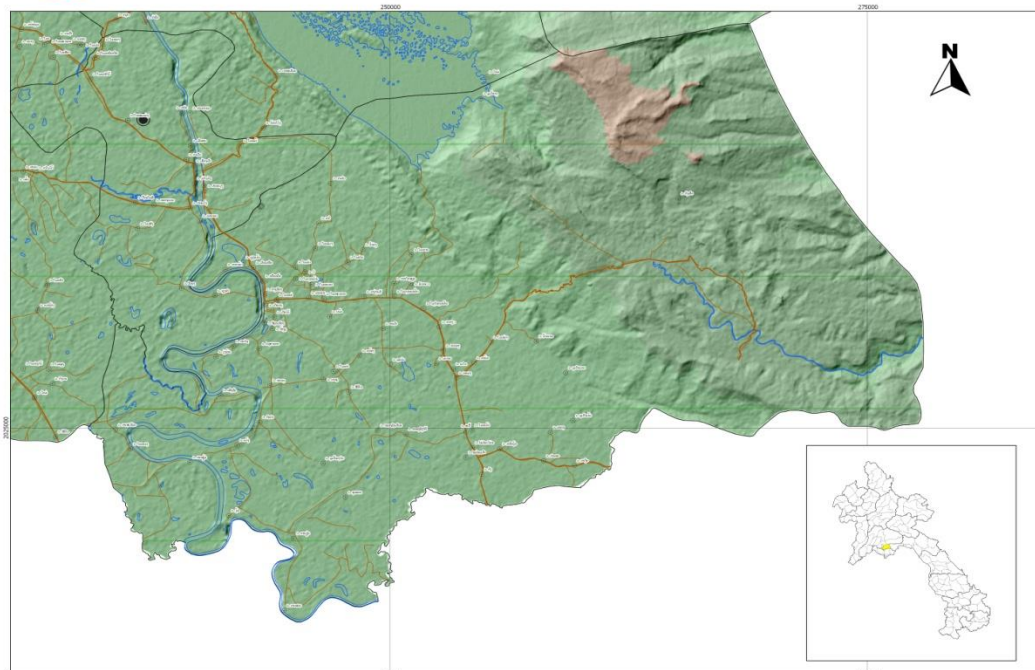
**Labor:** Thoulakhom District has a total population of approximately 55,200 people with the workforce accounting for 35% of the population. Local daily wage is 50,000 kip per person.





# ແຜນທີ່ 1: ແຜນທີ່ການປົກຄອງ - ເມືອງ ທຸລະຄົມ - ແຂວງ ວຽງຈັນ

ແຜນທີ່ດາວທະນາເສດຖະກິດ-ສັງຄົມ ໄລຍະ 5 ປີ ຂອງເມືອງ (2016-2020)



ສອບຖອນ: ສຳນວນຈັດແບ່ງແຜນທີ່ດາວທະນາເສດຖະກິດ-ສັງຄົມ ປີ 2010.  
ສຳນວນຜູ້ຈັດແບ່ງແຜນທີ່ດາວທະນາເສດຖະກິດ-ສັງຄົມ ແລະ ກົມວິຊາ  
ສຳນວນຜູ້ຈັດແບ່ງແຜນທີ່ດາວທະນາເສດຖະກິດ-ສັງຄົມ  
Coordinate Reference System: WGS 84 / UTM 48N



Scale 1 : 110000

## Income/Incentives & Minimum Requirements

### Income generating opportunities from:

- Selling of rice in domestic and export markets .

### Incentives

- 4 years profit tax holidays; and
- Import Tax Exemption for equipment to operate the project.



### Support from the Government

- Shorten project application process;
- Provide consultation in every step of the project application process; and
- Facilitate access to in other public services.

### Minimum Requirements

- Memorandum of Understanding (MOU);
- Feasibility studies and business development plan;
- Industrial farms of 20-400 ha require an Initial Environmental Examination (IEE) while farms greater than 40 ha must undertake an Environmental and Social Impact Assessment (ESIA). The IEE or ESIA will involve the public and seek to mitigate all negative impacts while maximizing benefits;
- Land lease agreements with private land owners;
- Any business operation licenses and agreements required by concerned government authorities;
- Capital of US\$600,000 USD;
- Must have a 'buy local' policy;
- Must provide business opportunities for local community and promote the livelihood of local villagers;
- Must give priority to locals in the job recruitment process; and
- Must contribute to the community development fund.

## Contact:

Ministry of Planning and Investment,  
Investment Promotion Sector, Department of Planning  
and Investment, Vientiane Province

Tel: +856-23-400 155

email: vt\_dopi@hotmail.com

Planning and Investment Office, Thoulakhom District



## Disclaimer:

The information in this document (including but not limited to, photographs, descriptions, tables, projections and prices) are for guidance only. While every effort has been made to offer current and reasonable estimates, errors can occur. The investment promotion department of the Ministry of Planning and Investment makes no warranties or representations as to the accuracy, correctness, reliability or otherwise with respect to such information, and assumes no liability or responsibility for any errors or omissions in the content contained in this document. Within this document you may find links or references to third party material and third party web sites. The IPD accepts no liability in respect of the contents of such material or sites. The IPD should not be taken to be endorsing, publishing, permitting or authorizing such materials or sites. The IPD may revise the information and resources contained in this document from time to time and reserves the right to make such changes without any obligation to notify past, current or prospective visitors to this document.

The content relating to the potential performance of an investment is not necessarily a guide to its performance in the future. The value of investments or income from them may go down as well as up. Prices quoted were based on US dollars when the document was created.

The information contained in this document should not be construed as financial, tax, legal or any other professional advice or service. You are advised to consult a financial and/or legal professional advisor from suitably regulated sources.

Except where noted otherwise, all material in this document is the property of IPD with all rights reserved. Without the prior written consent of IPD, no permission is granted to copy, modify, post or frame any text, graphics, or logos.